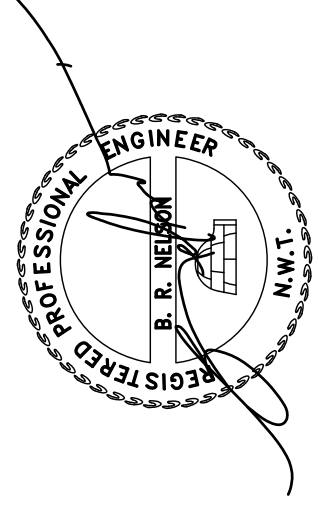


FABRICATOR NOTE:

1. ALL BOLTED CONNECTIONS TO BE 2"x2"x3/16" ANGLE, C/W NUT AND LOCK WASHER, UNLESS NOTED OTHERWISE.



PERMIT TO PRACTICE NELSON ENGINEERING INC.

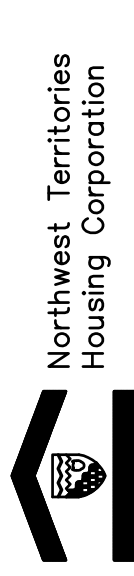
Signature: _____
Date: September 2, 2010

PERMIT NUMBER: P406
The Association of Professional Engineers, Geologists and Geophysicists of the NWT, NWT.

THE INFORMATION CONTAINED ON THIS DRAWING HAS BEEN PREPARED FOR THE SOLE PURPOSE OF THE PROJECT DESCRIBED HEREIN. IT IS NOT TO BE USED FOR ANY OTHER PURPOSE WITHOUT THE WRITTEN CONSENT OF THE OWNER. USE OF THIS INFORMATION FOR ANY PURPOSE OTHER THAN THE PROJECT DESCRIBED HEREIN IS PROHIBITED. NO LIABILITY WILL BE ASSUMED FOR ANY BREACH OF COPYRIGHT AND MAY BE PUNISHED AS SUCH.

No.	REVISION	DATE	BY
0	Issued for construction	09/02/10	brn
1			
2			
3			
4			

A - DETAIL NO.
S1 - DRAWING DETAILS ORIGINATES



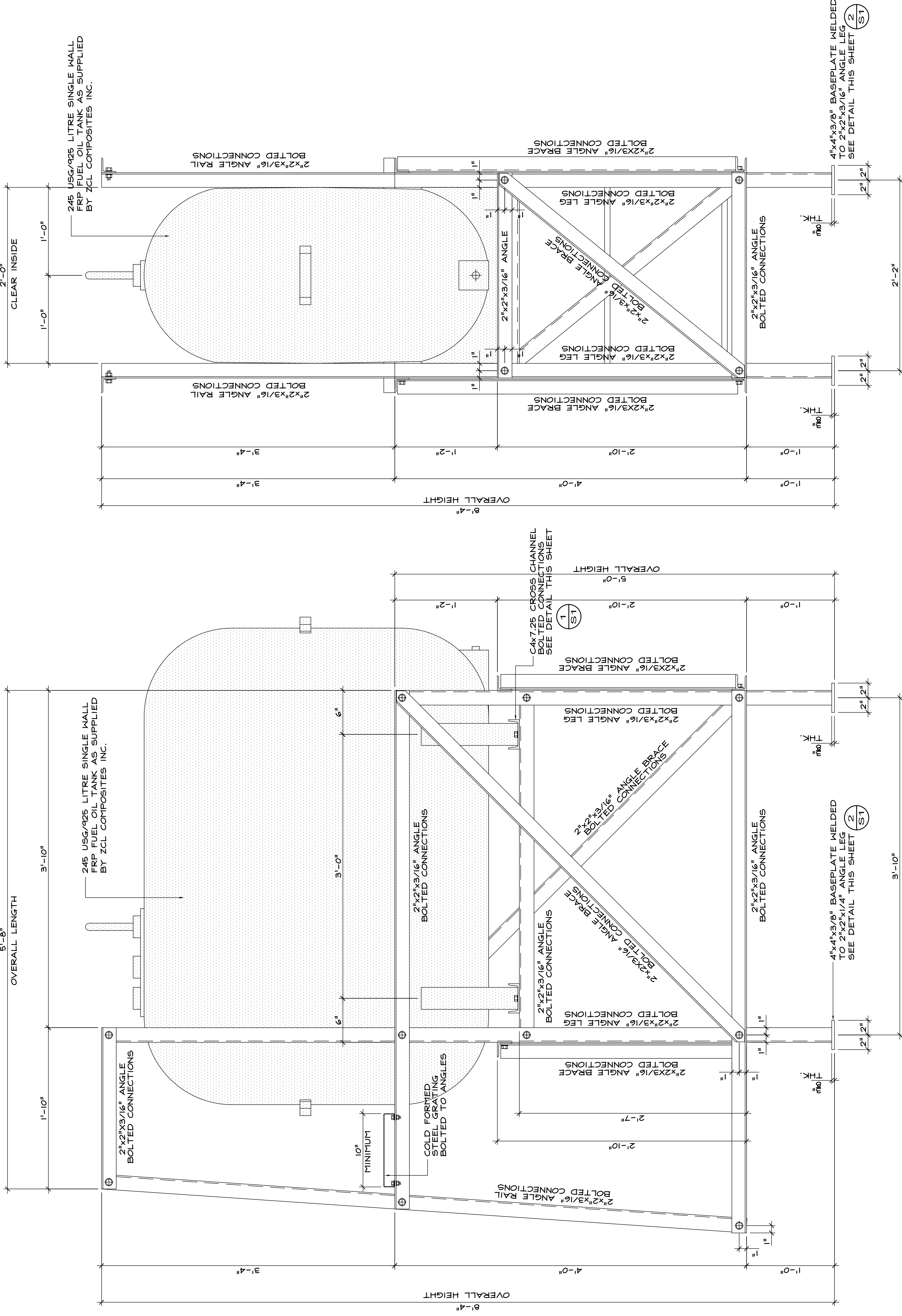
PROJECT:
HOME OWNERSHIP
FRP FUEL OIL TANK STAND
REGULAR HEIGHT

DRAWING:
FRONT VIEW
SIDE VIEW
CROSS CHANNEL DETAIL
BASEPLATE DETAIL

CHECKED BY:
DATE: September 2010
SCALE: as noted

FILE No. 2397
SHEET No. S1

REVISION 0

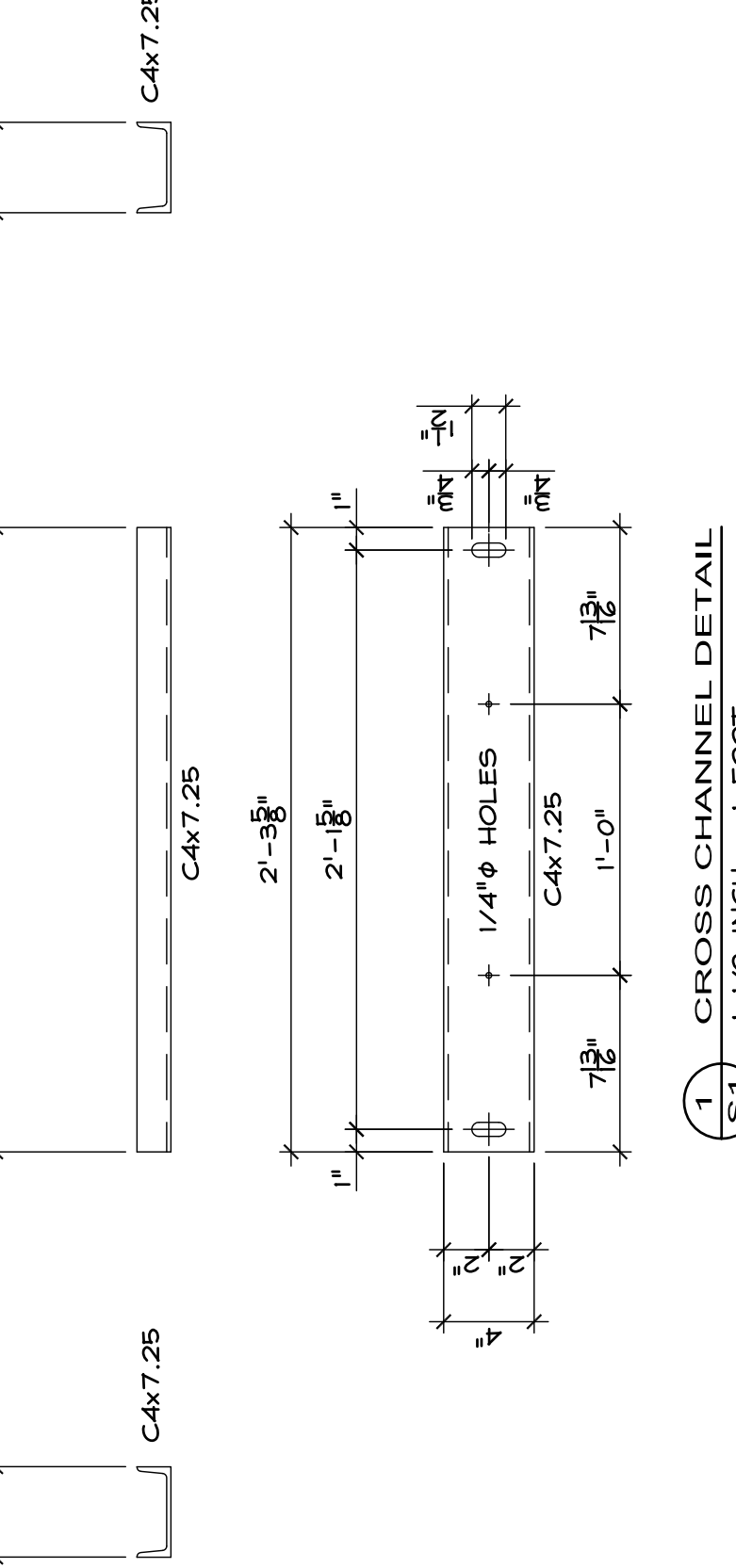


(A) FUEL TANK STAND - FRONT VIEW
S1 1 1/2 INCH = 1 FOOT

(B) FUEL TANK STAND - SIDE VIEW
S1 1 1/2 INCH = 1 FOOT

(C) FUEL TANK STAND - REAR VIEW
S1 1 1/2 INCH = 1 FOOT

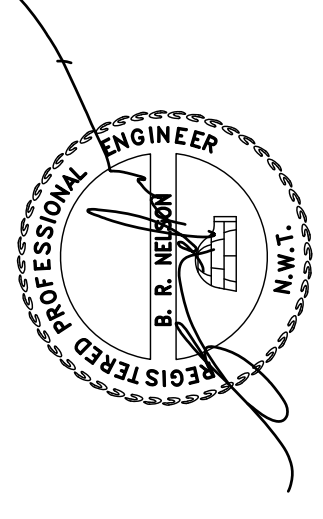
- ### STRUCTURAL STEEL SPECIFICATION
- 1) STRUCTURAL STEEL IS TO CONFORM TO CSA G40.21 WITH THE FOLLOWING GRADES:
ANGLES 300M
CHANNELS 300M
BARS AND PLATES 300M
 - 2) SUPPLY MISCELLANEOUS ITEMS INCLUDING ALL ANCHOR BOLTS, LUGS, WELDED LUGS, GUSSETS, SUPPLY ALL ANGLES SPECIFICALLY CALLED FOR ELSEWHERE. CHANNELS, NUTS AND BOLTS AND OTHER ANCILLARY FASTENING NOT SPECIFIED ELSEWHERE.
 - 3) BASE PLATE ANCHOR BOLTS ARE TO CONFORM TO CSA A-36 TO DIAMETERS AND LENGTHS INDICATED ON DRAWINGS.
 - 4) FABRICATE AND ERECT STRUCTURAL STEEL TO CSA S16-01 BY THE CANADIAN WELDING BUREAU TO THE REQUIREMENTS ALL CSA 447; DIMENSIONS ARE TO BE PRIMED AND PAINTED TO THE CLIENT'S CONTRACT SPECIFICATIONS.
 - 5) STEEL GRATING SHALL BE HOT DIPPED GALVANIZED, 13 GAUGE, COLD FORMED, ONE PIECE STANDARD OF ACCEPTANCE. SAFETY-10" WIDE x 1 1/2" THK. x WIDTH AS PER SKETCH AND AS MANUFACTURED BY ISC SAFETY GRATING PRODUCTS LTD.



(1) CROSS CHANNEL DETAIL
S1 1 1/2 INCH = 1 FOOT

(2) BASEPLATE DETAIL
S1 3 INCH = 1 FOOT

FABRICATOR NOTE:
1. ALL BOLTED CONNECTIONS TO BE 1/2" GRADE 8 BOLTS, C/W NUT AND LOCK WASHER.
2. ALL HOLES TO BE 1/16" UNLESS NOTED OTHERWISE.



PERMIT TO PRACTICE
NELSON ENGINEERING INC.
Signature: _____
Date: September 2, 2010
PERMIT NUMBER: P406
The Association of Professional Engineers, Geologists and Geophysicists of the NWT, NU

THE INFORMATION CONTAINED ON THIS DRAWING HAS BEEN PREPARED FOR THE SOLE PURPOSE OF THE PROJECT DESCRIBED HEREIN. IT IS NOT TO BE USED FOR ANY OTHER PURPOSE OTHER THAN THE PROJECT DESCRIBED HEREIN. USE OF THIS INFORMATION WILL BE CONSIDERED A BREACH OF COPYRIGHT AND MAY BE PUNISHED AS SUCH.

No.	REVISION	DATE	BY
0	Issued for construction	2010	brn
1			
2			
3			
4			

A - DETAIL NO. OF REVISIONS
S1 - SHEET OR SHEETS WHERE DETAIL ORIGINATES

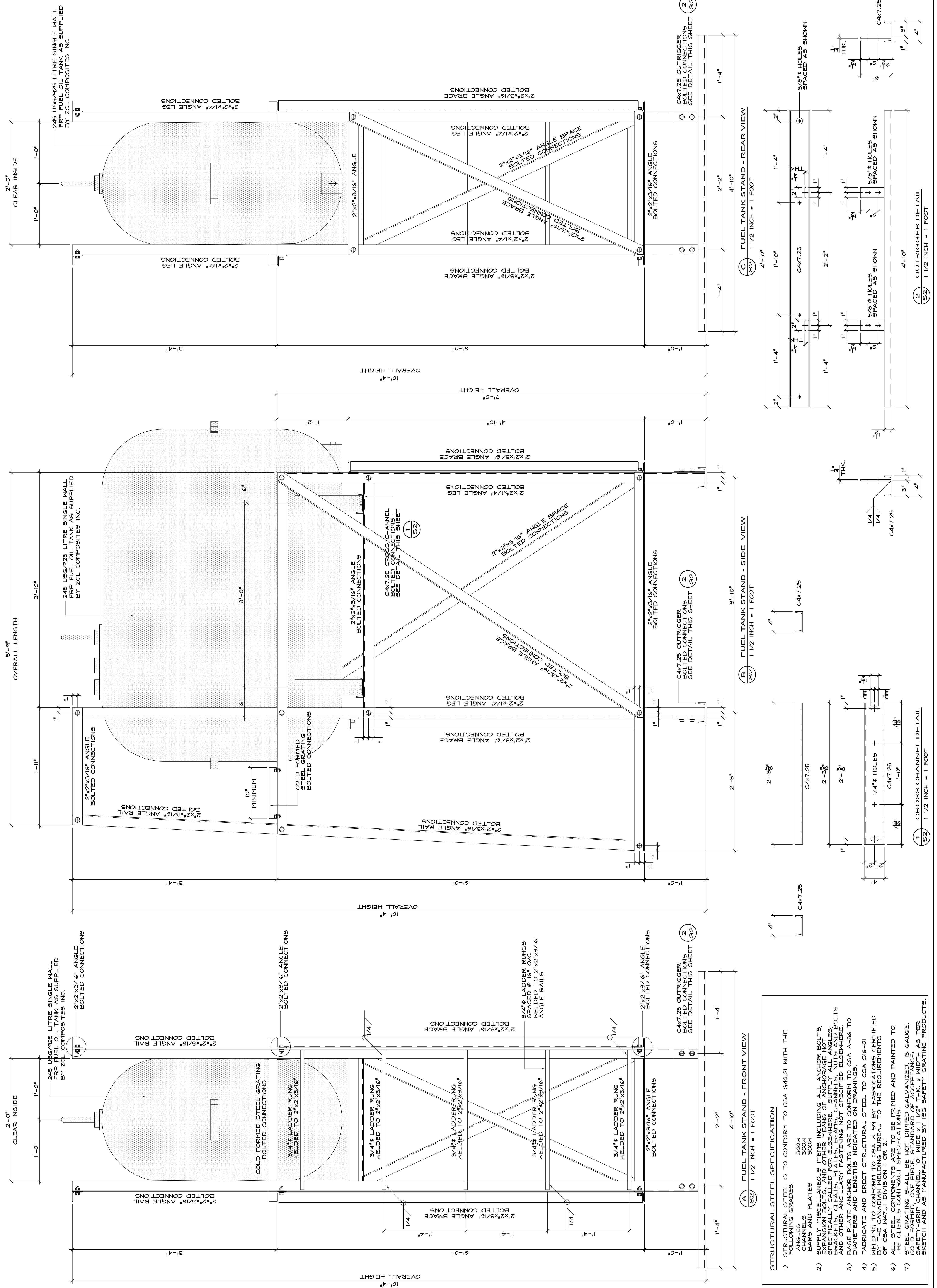


PROJECT:
HOME OWNERSHIP
FRP FUEL OIL TANK STAND
TALL HEIGHT

DRAWING:
FRONT VIEW
SIDE VIEW
CROSS CHANNE DETAIL
OUTRIGGER DETAIL

CHECKED BY:
DATE: September 2010
SCALE: as noted
FILE NO.: 2397
SHEET NO.: S2

REVISION: 0



245 USG/925 LITRE SINGLE WALL FRP FUEL OIL TANK AS SUPPLIED BY ZCL COMPOSITES INC.

245 USG/925 LITRE SINGLE WALL FRP FUEL OIL TANK AS SUPPLIED BY ZCL COMPOSITES INC.

245 USG/925 LITRE SINGLE WALL FRP FUEL OIL TANK AS SUPPLIED BY ZCL COMPOSITES INC.

2"x2"x3/16" ANGLE LEG BOLTED CONNECTIONS

2"x2"x3/16" ANGLE LEG BOLTED CONNECTIONS

2"x2"x3/16" ANGLE RAIL BOLTED CONNECTIONS

2"x2"x3/16" ANGLE BRACE BOLTED CONNECTIONS

2"x2"x3/16" ANGLE BRACE BOLTED CONNECTIONS

2"x2"x3/16" ANGLE BRACE BOLTED CONNECTIONS

2"x2"x3/16" ANGLE BRACE BOLTED CONNECTIONS

2"x2"x3/16" ANGLE BRACE BOLTED CONNECTIONS

2"x2"x3/16" ANGLE BRACE BOLTED CONNECTIONS

2"x2"x3/16" ANGLE BRACE BOLTED CONNECTIONS

2"x2"x3/16" ANGLE BRACE BOLTED CONNECTIONS

2"x2"x3/16" ANGLE BRACE BOLTED CONNECTIONS

2"x2"x3/16" ANGLE BRACE BOLTED CONNECTIONS

2"x2"x3/16" ANGLE BRACE BOLTED CONNECTIONS

2"x2"x3/16" ANGLE BRACE BOLTED CONNECTIONS

2"x2"x3/16" ANGLE BRACE BOLTED CONNECTIONS

2"x2"x3/16" ANGLE BRACE BOLTED CONNECTIONS

2"x2"x3/16" ANGLE BRACE BOLTED CONNECTIONS

2"x2"x3/16" ANGLE BRACE BOLTED CONNECTIONS

2"x2"x3/16" ANGLE BRACE BOLTED CONNECTIONS

2"x2"x3/16" ANGLE BRACE BOLTED CONNECTIONS

2"x2"x3/16" ANGLE BOLTED CONNECTIONS

2"x2"x3/16" ANGLE BOLTED CONNECTIONS

2"x2"x3/16" ANGLE RAIL BOLTED CONNECTIONS

2"x2"x3/16" ANGLE RAIL BOLTED CONNECTIONS

2"x2"x3/16" ANGLE RAIL BOLTED CONNECTIONS

2"x2"x3/16" ANGLE RAIL BOLTED CONNECTIONS

2"x2"x3/16" ANGLE RAIL BOLTED CONNECTIONS

2"x2"x3/16" ANGLE RAIL BOLTED CONNECTIONS

2"x2"x3/16" ANGLE RAIL BOLTED CONNECTIONS

2"x2"x3/16" ANGLE RAIL BOLTED CONNECTIONS

2"x2"x3/16" ANGLE RAIL BOLTED CONNECTIONS

2"x2"x3/16" ANGLE RAIL BOLTED CONNECTIONS

2"x2"x3/16" ANGLE RAIL BOLTED CONNECTIONS

2"x2"x3/16" ANGLE RAIL BOLTED CONNECTIONS

2"x2"x3/16" ANGLE RAIL BOLTED CONNECTIONS

2"x2"x3/16" ANGLE RAIL BOLTED CONNECTIONS

2"x2"x3/16" ANGLE RAIL BOLTED CONNECTIONS

2"x2"x3/16" ANGLE RAIL BOLTED CONNECTIONS

2"x2"x3/16" ANGLE RAIL BOLTED CONNECTIONS

2"x2"x3/16" ANGLE RAIL BOLTED CONNECTIONS

2"x2"x3/16" ANGLE RAIL BOLTED CONNECTIONS

2"x2"x3/16" ANGLE RAIL BOLTED CONNECTIONS

2"x2"x3/16" ANGLE RAIL BOLTED CONNECTIONS

2"x2"x3/16" ANGLE RAIL BOLTED CONNECTIONS

2"x2"x3/16" ANGLE RAIL BOLTED CONNECTIONS

2"x2"x3/16" ANGLE RAIL BOLTED CONNECTIONS

2"x2"x3/16" ANGLE RAIL BOLTED CONNECTIONS

2"x2"x3/16" ANGLE RAIL BOLTED CONNECTIONS

2"x2"x3/16" ANGLE RAIL BOLTED CONNECTIONS

2"x2"x3/16" ANGLE RAIL BOLTED CONNECTIONS

2"x2"x3/16" ANGLE RAIL BOLTED CONNECTIONS

2"x2"x3/16" ANGLE RAIL BOLTED CONNECTIONS

2"x2"x3/16" ANGLE RAIL BOLTED CONNECTIONS

2"x2"x3/16" ANGLE RAIL BOLTED CONNECTIONS

2"x2"x3/16" ANGLE RAIL BOLTED CONNECTIONS

2"x2"x3/16" ANGLE RAIL BOLTED CONNECTIONS

2"x2"x3/16" ANGLE RAIL BOLTED CONNECTIONS

2"x2"x3/16" ANGLE RAIL BOLTED CONNECTIONS

2"x2"x3/16" ANGLE RAIL BOLTED CONNECTIONS

2"x2"x3/16" ANGLE RAIL BOLTED CONNECTIONS

2"x2"x3/16" ANGLE RAIL BOLTED CONNECTIONS

2"x2"x3/16" ANGLE RAIL BOLTED CONNECTIONS

2"x2"x3/16" ANGLE RAIL BOLTED CONNECTIONS

2"x2"x3/16" ANGLE RAIL BOLTED CONNECTIONS

2"x2"x3/16" ANGLE RAIL BOLTED CONNECTIONS

2"x2"x3/16" ANGLE RAIL BOLTED CONNECTIONS

2"x2"x3/16" ANGLE RAIL BOLTED CONNECTIONS

2"x2"x3/16" ANGLE RAIL BOLTED CONNECTIONS

2"x2"x3/16" ANGLE RAIL BOLTED CONNECTIONS

2"x2"x3/16" ANGLE RAIL BOLTED CONNECTIONS

2"x2"x3/16" ANGLE RAIL BOLTED CONNECTIONS

2"x2"x3/16" ANGLE RAIL BOLTED CONNECTIONS

2"x2"x3/16" ANGLE RAIL BOLTED CONNECTIONS

2"x2"x3/16" ANGLE RAIL BOLTED CONNECTIONS

2"x2"x3/16" ANGLE RAIL BOLTED CONNECTIONS

2"x2"x3/16" ANGLE RAIL BOLTED CONNECTIONS

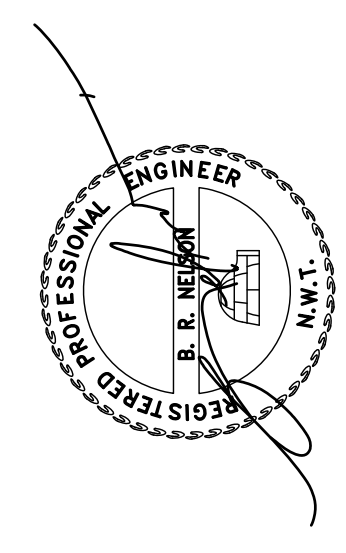
2"x2"x3/16" ANGLE RAIL BOLTED CONNECTIONS

2"x2"x3/16" ANGLE RAIL BOLTED CONNECTIONS

2"x2"x3/16" ANGLE RAIL BOLTED CONNECTIONS

2"x2"x3/16" ANGLE RAIL BOLTED CONNECTIONS

FABRICATOR NOTE:
1. ALL BOLTED CONNECTIONS TO BE 1/2" GRADE 8 BOLTS, C/W NUT AND LOCK WASHER.
2. ALL HOLES TO BE 1/16" Ø UNLESS NOTED OTHERWISE.

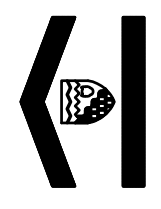


PERMIT TO PRACTICE
NELSON ENGINEERING INC.
Signature: _____
Date: September 2, 2010
PERMIT NUMBER: P406
The Association of Professional Engineers, Geologists and Geophysicists of the NWT (NUGG)

THE INFORMATION CONTAINED ON THIS DRAWING HAS BEEN PREPARED FOR THE SOLE PURPOSE OF THE PROJECT DESCRIBED HEREIN AND IS NOT TO BE USED FOR ANY OTHER PURPOSE OTHER THAN THE PROJECT DESCRIBED HEREIN. THE USER OF THIS INFORMATION WILL BE CONSIDERED A BREACH OF COPYRIGHT AND MAY BE PROSECUTED AS SUCH.

No.	REVISION	DATE	BY
0	Issued for construction		brn
1			
2			
3			
4			

A - DETAIL NO.
SI - SEE OTHER DRAWINGS FOR DETAIL OR SHOWING WHERE DETAIL ORIGINATES

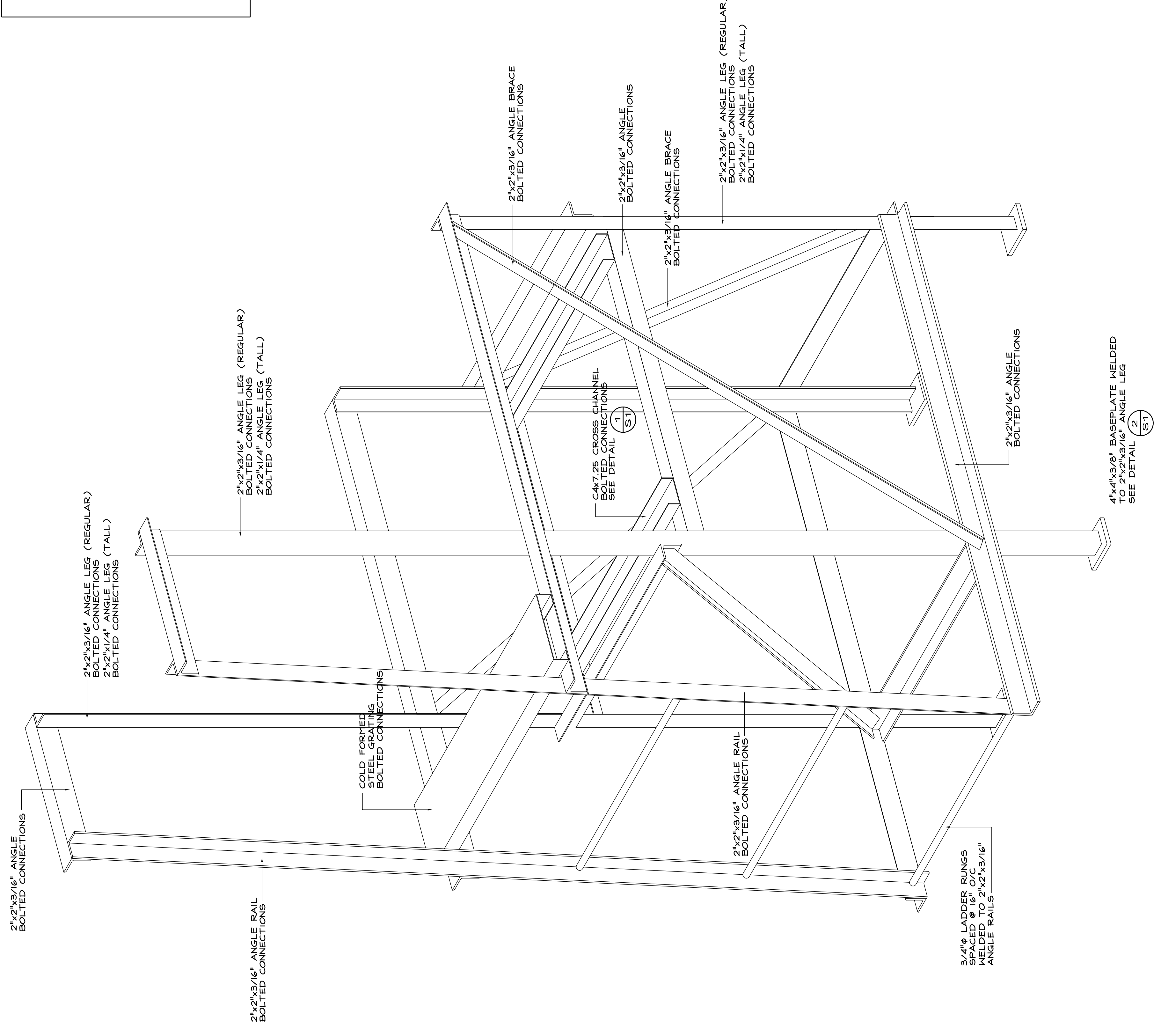


PROJECT:
HOME OWNERSHIP
FRP FUEL OIL TANK STAND

DRAWING:
ASSEMBLY DRAWING
SPECIFICATION

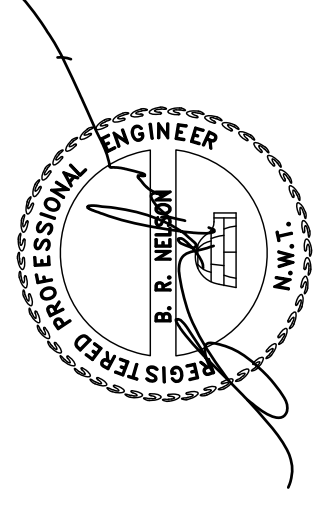
DRAWN: brn	CHECKED BY:
DATE: September 2010	SCALE: as noted
FILE No. 2397	SHEET No. S3
REVISION	REVISION 0

STRUCTURAL STEEL SPECIFICATION
STRUCTURAL STEEL IS TO CONFORM TO CSA G40.21 WITH THE FOLLOWING GRADES:
300M
350M
300M
350M
CHANNELS
PLATES
1) STRUCTURAL STEEL IS TO CONFORM TO CSA G40.21 WITH THE FOLLOWING GRADES.
2) SUPPLY MISCELLANEOUS ITEMS INCLUDING ALL ANGLES BOLTS, EXPANSION BOLTS AND OTHER MEANS OF ANCHORAGE NOT SPECIFICALLY CALLED FOR ELSEWHERE. SUPPLY ALL ANGLES, BRACKETS, CLEATS, PLATES, BEAMS, CHANNELS, NUTS AND BOLTS AND OTHER ANGULAR FASTENING NOT SPECIFIED ELSEWHERE.
3) ALL ANGLES TO BE HOT DIPPED GALVANIZED, 13 GAUGE TO DIAPETERS AND LENGTHS INDICATED ON DRAWINGS.
4) FABRICATE AND ERECT STRUCTURAL STEEL TO CSA S16-01
5) WELDING TO CONFORM TO CSA W474 BY FABRICATORS CERTIFIED TO THE REQUIREMENTS OF THE WELDING INSTITUTE OF CANADA TO THE REQUIREMENTS OF CSA W47.1 DIVISION 1 OR 2.1
6) ALL STEEL COMPONENTS ARE TO BE PRIMED AND PAINTED TO THE CLIENTS CONTRACT SPECIFICATIONS.
7) STEEL GRATING SHALL BE HOT DIPPED GALVANIZED, 13 GAUGE, COLD FORMED ONE PIECE. STANDARD OF ACCEPTANCE AS PER CANADA CODE OF PRACTICE FOR STEEL GRATING SHALL BE REFERRED TO SKETCH AND AS MANUFACTURED BY 15G SAFETY GRATING PRODUCTS.



(A) TYPICAL ASSEMBLY DRAWING
NTS

FABRICATOR NOTE:
1. ALL BOLTED CONNECTIONS TO BE 2"X GRADE 8 BOLTS, C/M NUT AND LOCK WASHER.
2. ALL HOLES TO BE 9/16" UNLESS NOTED OTHERWISE.



PERMIT TO PRACTICE
NELSON ENGINEERING INC.
Signature: [Signature] Date: September 2, 2010
PERMIT NUMBER: P406
The Association of Professional Engineers, Geologists and Geophysicists of the NWT (NWT)

THE INFORMATION CONTAINED ON THIS DRAWING HAS BEEN PREPARED FOR THE SOLE PURPOSE OF THE PROJECT DESCRIBED HEREIN. IT IS NOT TO BE USED FOR ANY OTHER PURPOSE OTHER THAN THE PROJECT DESCRIBED HEREIN. USE OF THIS INFORMATION WILL BE CONSIDERED A BREACH OF COPYRIGHT AND MAY BE PUNISHED AS SUCH.

No.	REVISION	DATE	BY
0	Issued for construction	2010/09/02	brn
1			
2			
3			
4			

A - DETAIL NO.
SI - SEE DRAWING DETAIL OR SHOWING WHERE DETAIL ORIGINATES



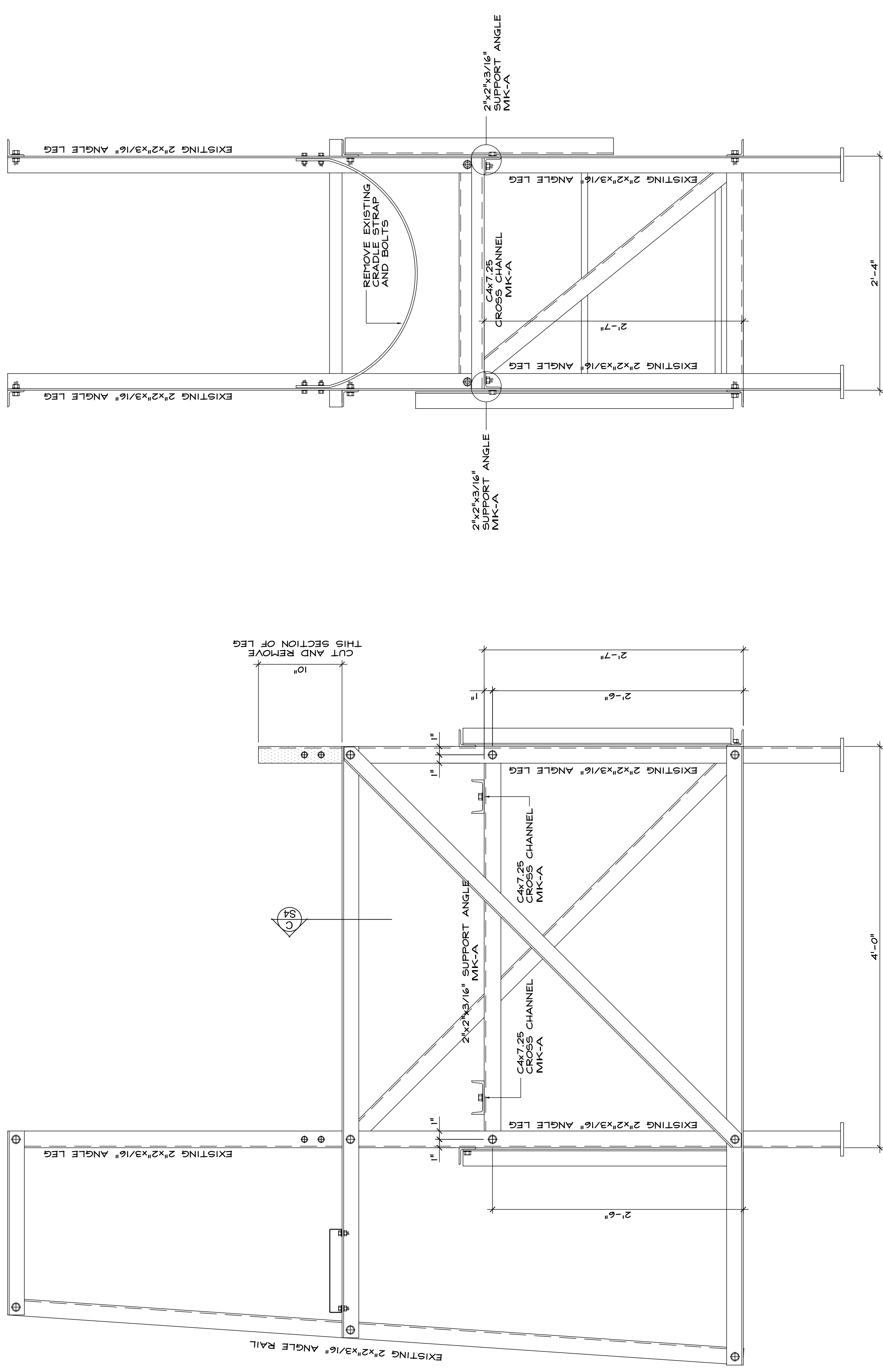
PROJECT:
HOME OWNERSHIP
FUEL OIL TANK STAND
REGULAR HEIGHT
FRP TANK RETROFIT

DRAWING:
FRONT VIEW
SIDE VIEW SECTION
SUPPORT ANGLE - MK-A
CROSS CHANNEL - MK-B

DRAWN: brn
CHECKED BY:
DATE: September 2010
SCALE: as noted

FILE No. **2397**
SHEET No. **S4**

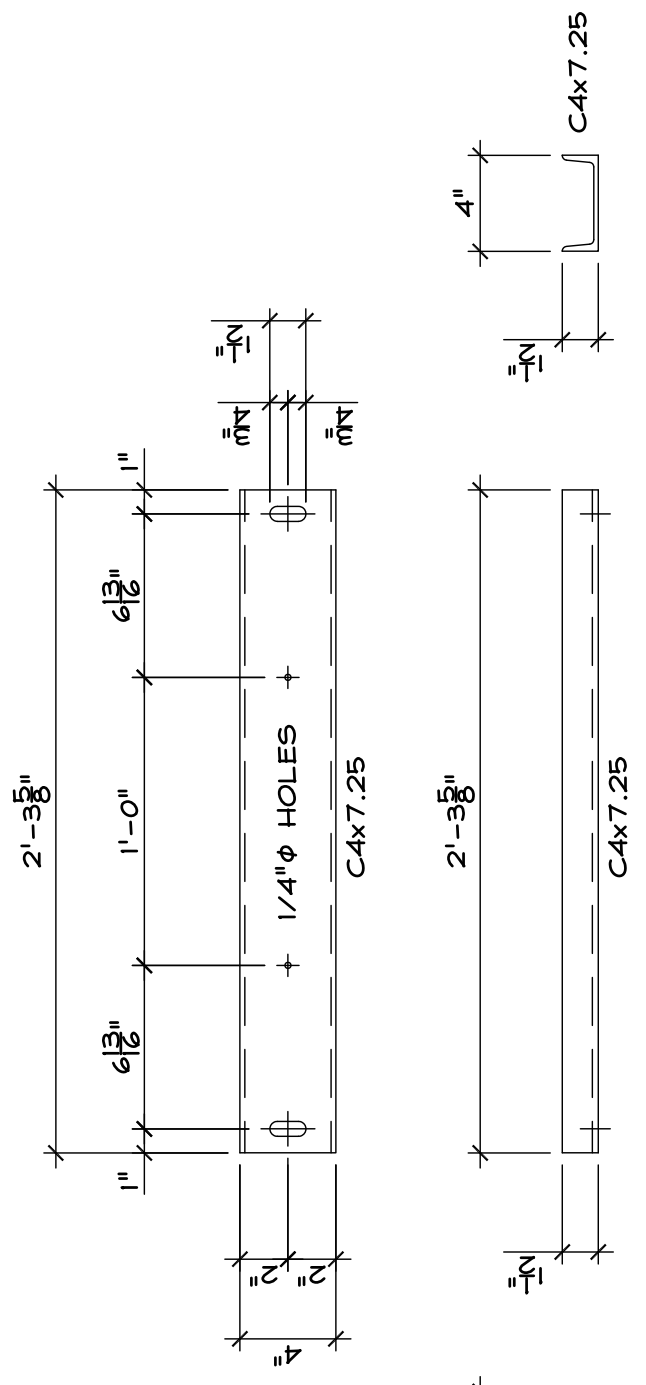
REVISION **0**



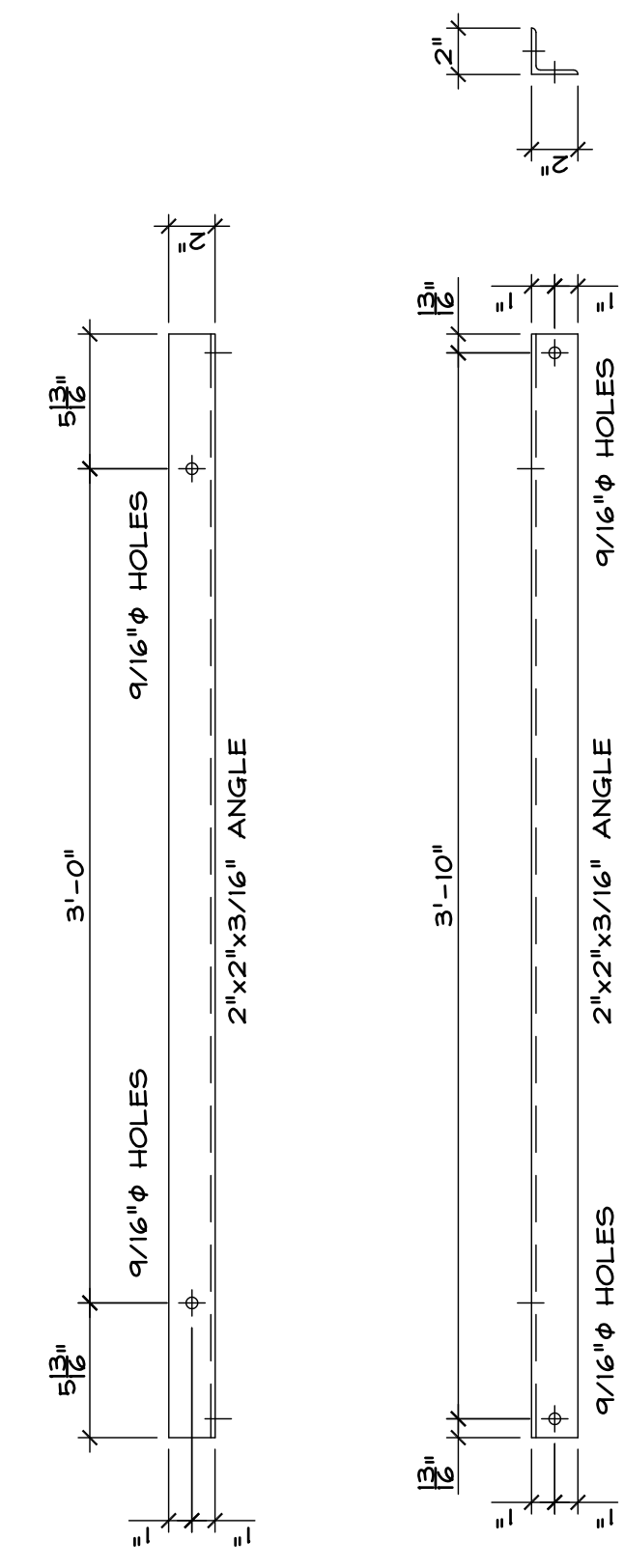
(C) PARTIAL SECTION
S4 1 1/2 INCH = 1 FOOT

(B) FUEL TANK STAND - SIDE VIEW
S4 1 1/2 INCH = 1 FOOT

(A) FUEL TANK STAND - FRONT VIEW
S4 1 1/2 INCH = 1 FOOT



(2) CROSS CHANNEL - MK-B
S4 1 1/2 INCH = 1 FOOT



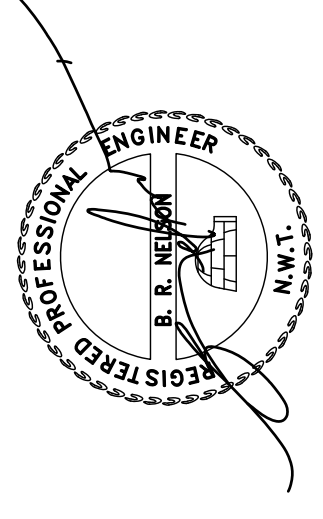
(1) SUPPORT ANGLE - MK-A
S4 1 1/2 INCH = 1 FOOT

STRUCTURAL STEEL SPECIFICATION

- STRUCTURAL STEEL IS TO CONFORM TO CSA G40.21 WITH THE FOLLOWING GRADES:
ANGLES 300N
CHANNELS 300N
BARS AND PLATES 300N
- SUPPLY MISCELLANEOUS ITEMS INCLUDING ALL ANCHOR BOLTS, EXPANSION BOLTS, AND OTHER MEANS OF ANCHORAGE NOT SHOWN ON DRAWINGS. CHANNELS, PLATES, NUTS AND BOLTS BRACKETS, CLEATS, PLATES, BEAMS, CHANNELS, NUTS AND BOLTS AND OTHER ANCILLARY FASTENING NOT SPECIFIED ELSEWHERE.
- BASE PLATE ANCHOR BOLTS ARE TO CONFORM TO CSA A-36 TO DIAMETERS AND LENGTHS INDICATED ON DRAWINGS.
- FABRICATE AND ERECT STRUCTURAL STEEL TO CSA 516-01 BY THE CANADIAN WELDING BUREAU TO THE REQUIREMENTS OF CSA W47.1, DIVISION 1 OR 2.1
- ALL STEEL COMPONENTS SPECIFIED ARE TO BE PRIMED AND PAINTED TO THE STEEL COMPANY'S SPECIFICATIONS
- STEEL GRATING SHALL BE HOT DIPPED GALVANIZED, B GAUGE COLD FORMED, ONE PIECE, STANDARD OF ACCEPTANCE, SAFETY-GRIP CHANNEL 10" WIDE x 1 1/2" THK. x WIDTH AS PER SKETCH AND AS MANUFACTURED BY ISG SAFETY GRATING PRODUCTS LTD.

FABRICATOR NOTE:

- ALL BOLTED CONNECTIONS TO BE 1/2"Ø, GRADE 8 BOLTS, C/W NUT AND LOCK WASHER.
- ALL HOLES TO BE 9/16"Ø UNLESS NOTED OTHERWISE.



PERMIT TO PRACTICE
NELSON ENGINEERING INC.
Signature: _____
Date: September 2, 2010
PERMIT NUMBER: P406
The Association of Professional Engineers, Geologists and Geophysicists of the NWT (NUGG)

THE INFORMATION CONTAINED ON THIS DRAWING HAS BEEN PREPARED FOR THE SOLE PURPOSE OF THE PROJECT DESCRIBED HEREIN. IT IS NOT TO BE USED FOR ANY OTHER PURPOSE OTHER THAN THE PROJECT DESCRIBED HEREIN. THE USER OF THIS INFORMATION WILL BE CONSIDERED A BREACH OF COPYRIGHT AND MAY BE PUNISHED AS SUCH.

No.	REVISION	DATE	BY
0	Issued for construction	brn	
1			
2			
3			
4			

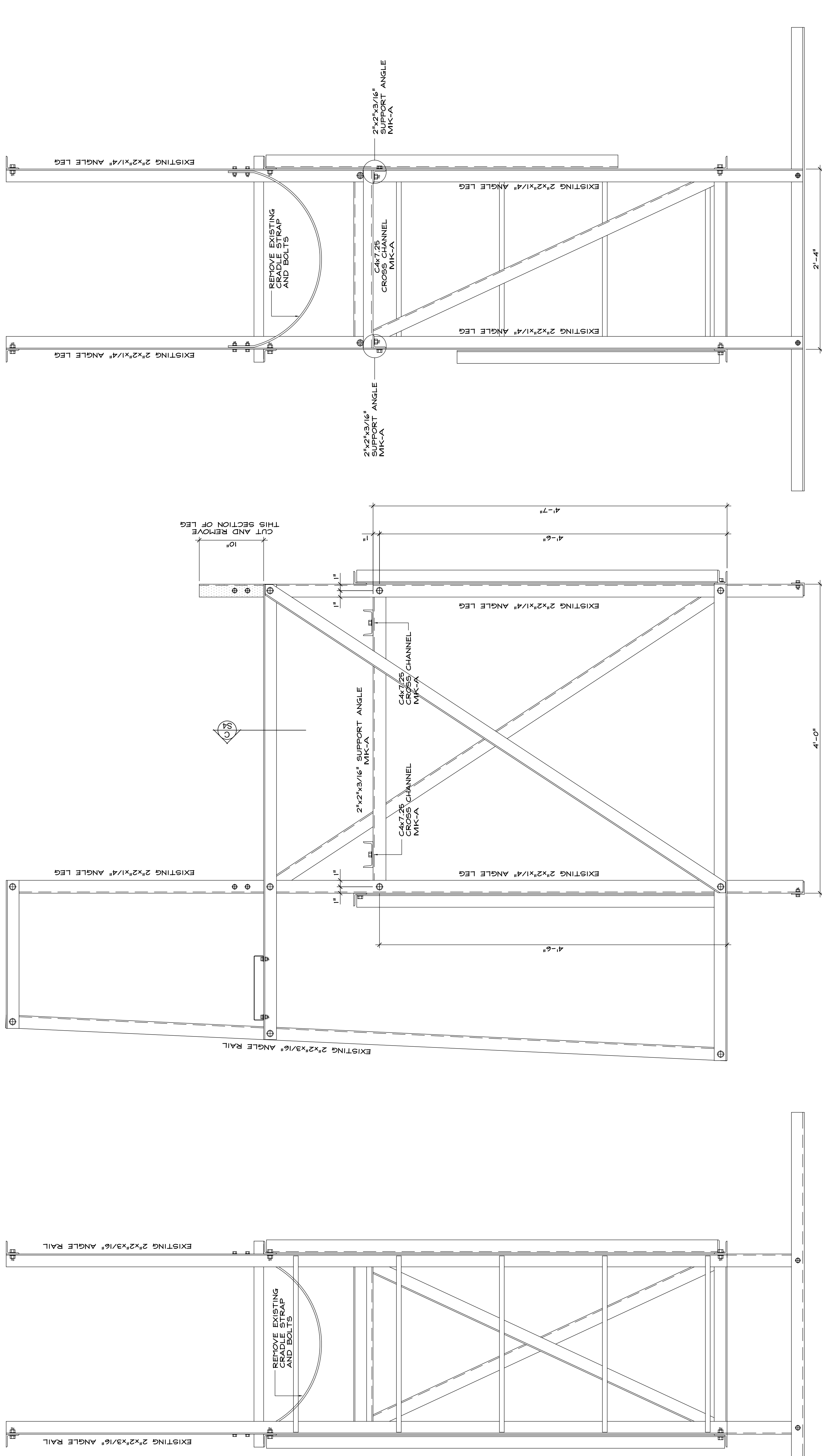
A - DETAIL NO. REFERENCE TO DRAWING DETAIL OR SHOWN WHERE DETAIL ORIGINATES



PROJECT:
HOME OWNERSHIP
FUEL OIL TANK STAND
TALL HEIGHT
FRP TANK RETROFIT

DRAWING:
FRONT VIEW
SIDE VIEW
PARTIAL SECTION
SUPPORT ANGLE - MK-A
CROSS CHANNEL - MK-B

DRAWN: brn
DATE: september 2010
SCALE: as noted
FILE No. **2397**
SHEET No. **S5**
REVISION **0**



(A) FUEL TANK STAND - FRONT VIEW
1 1/2 INCH = 1 FOOT

(B) FUEL TANK STAND - SIDE VIEW
1 1/2 INCH = 1 FOOT

(C) PARTIAL SECTION
1 1/2 INCH = 1 FOOT

STRUCTURAL STEEL SPECIFICATION

- STRUCTURAL STEEL IS TO CONFORM TO CSA G40.21 WITH THE FOLLOWING GRADES:
ANGLE 300M
PLATE 300M
BARS AND PLATES 300M
- SUPPLY MISCELLANEOUS ITEMS INCLUDING ALL ANCHOR BOLTS, EXPANSION BOLTS, AND OTHER MEANS OF ANCHORAGE NOT SPECIFICALLY CALLED FOR ELSEWHERE. SUPPLY ALL ANGLES, CHANNELS, CROSS CHANNELS, SUPPORT ANGLE, CRADLE STRAP AND OTHER ANCILLARY FASTENING NOT SPECIFIED ELSEWHERE.
- BASE PLATE ANCHOR BOLTS ARE TO CONFORM TO CSA A-36 TO DIAMETERS AND LENGTHS INDICATED ON DRAWINGS.
- FABRICATE AND ERECT STRUCTURAL STEEL TO CSA S16-01
- WELDING TO CONFORM TO CSA W-59 BY FABRICATORS CERTIFIED BY THE CANADIAN WELDING BUREAU TO THE REQUIREMENTS OF CSA W47.1 DIVISION 1 OR 2.1
- ALL STEEL COMPONENTS ARE TO BE PRIMED AND PAINTED TO THE CLIENTS CONTRACT SPECIFICATIONS.
- STEEL GRATING SHALL BE HOT DIPPED GALVANIZED 13 GAUGE (0.075 THICK) WITH 1/2" X 2" HOLE SIZE. THE GRATING SHALL BE MANUFACTURED BY ISG SAFETY GRATING PRODUCTS LTD.

(S) SUPPORT ANGLE - MK-A
1 1/2 INCH = 1 FOOT

(S) CROSS CHANNEL - MK-B
1 1/2 INCH = 1 FOOT